



2021



# ANNUAL REPORT



# CONTENTS

---

1

## OVERVIEW

Message from Our Executive Director

2

## HIGHLIGHTS

Data Highlights from Foundation to Now

3

## PROGRAMS

Courses and Programs

4

## WHO MAKES IT POSSIBLE

Staff, Board of Directors, Sponsors and Organizational Members

5

## FUNDING

Funding Status

6

## FUTURE PLANS

Plans for 2022

## Our Mission

To inspire recovery and wellness through professional development and continuing education, in order to equip emerging leaders and strengthen the peer and family support workforce.

# Executive Director Message

This is an exciting time, as Arizona Peer and Family Career Academy leads in a new era. While being a new independent nonprofit, we are incredibly lucky to have long program and system legacy. We are just as dedicated as ever to propelling the peer and family support workforce and system to the highest levels of quality. We believe that the magic comes from utilizing lived experience to make a difference in the lives of others.

We achieve our success through our growing collaboration with health plans, community organizations, providers and the workforce. It is our duty to ensure that we are developing our Peer and Family workforce to be emerging leaders. We take pride in providing support and guidance through coaching to strengthen our system.

This annual report highlights all our current programs and services, along with our financial statements for the year 2021-2022, and honors those who helped make it all possible.

We understand that the healthcare landscape is ever changing. We strive our best to remain responsive to ongoing workforce and system needs. As such, we are ongoingly developing trainings and programs to meet the needs of our community partners and contractors to ensure that our workforce is always prepared to deliver the best possible services to the community.

It is truly an honor to be leading the Peer and Family Career Academy in this new chapter of its journey as we embark as a new non profit organization. We appreciate the communities support in making this possible. We look forward to your participation in our trainings, programs and ensuring we can make a difference for many years to come.

*Hayley Winterberg*

Executive Director



"Our true power comes from channeling our lived experience!"





# Highlights

## 607 students trained

Total Students Educated By PFCA since foundation in 2015

## 155 students trained

in 2021



## Looking Back at 2021...

### TRAINING



14  
TRAININGS  
OFFERED



19  
PEER COACHES  
TRAINED



5  
LUNCH  
AND  
LEARNS

### ORGANIZATION



2 FULL TIME  
STAFF HIRED



501(c)3  
OBTAINED



4  
CONTRACTS  
TO MAKE A  
DIFFERENCE

### IMPACT



16% ALUMNI  
REPORT  
PROMOTION



1061  
CONTACTS



1,952 TRAINING  
HOURS

# Programs

## Trainings



**Forensic Support**  
Breaking Down the Barriers



**Opioid Use Crisis**  
Hope and Healing



**Motivational Leadership**  
Supervisor Course



**Self Care**  
Caring for Ourselves so we can care for others

89%

### IMPROVED ABILITY TO PERFORM IN THEIR CURRENT POSITION

Our alumni reported in a survey that they benefitted from the course through improved ability to perform in their current position.



**Abilities, Differences and Inclusion**  
Navigating the DDD System



**Advocacy**  
Becoming Champions of Change



**Lunch and Learns**  
Mini Trainings for Impact

"even my most stressful day melts away"

## Peer to Peer Coaching Program

Life and Wellness Coaching for Peer and Family Support Specialists

Group or 1:1 Coaching offered by specially trained Peer and Family Support Coaches



I learn so much from the other participants

Peer to Peer Program Participant

# Who Makes It Possible

## Sponsors

### Foundational Sponsor



### Silver Sponsors



### Bronze Sponsor



## Board Members

Dan Haley, Board Chair  
CEO, Hope, Inc.

Kimberly Craig, Board Vice Chair  
CEO, CHEEERS

Colleen McGregor, Board Treasurer  
Office of Individual & Family Affairs Administrator,  
Banner University Health Plans

Dawn McReynolds, Board Secretary  
Office of Individual & Family Affairs Administrator,  
United Healthcare Community Plan

Kathy Bashor  
President, Arizona Peer & Family Coalition

Leah Gibbs  
Office of Individual & Family Affairs Administrator,  
Arizona Department of Economic Security, Division of  
Developmental Disabilities

Lawrence Thomas  
Integrated Behavioral Health Specialist, Valleywise

Leon Canty  
Peer Support Training Coordinator, Copa Health

Christopher Gonzalez  
CEO, Hope Lives - Vive La Esperanza

Karin Kline  
Director of Child Welfare & Juvenile Justice Initiatives,  
Family Involvement Center

Tony Smith  
Office of Individual & Family Affairs Administrator,  
Arizona Complete Health

Veronica Welch  
Office of Individual & Family Affairs Administrator,  
Health Choice Arizona

Susan Kennard, Emeritus Board Member  
Bureau Chief, Arizona Health Care Cost Containment  
System (AHCCCS)

## Organizational Members

### Premier Member



# Who Makes It Possible

## Our Staff

Hayley Winterberg - Executive Director

**DISRUPTIVE  
INNOVATOR  
AWARD**  
NATIONAL ASSOCIATION  
OF PEER SUPPORTERS

**HAYLEY WINTERBERG**



This award is given to an individual who has made a significant transformative contribution to the field of Peer Support through their leadership, programming, and/or activism.



Sonnet Sharpe -  
Learning and Development Manager

Sonnet works closely with the Executive Director and our contracted trainers to train and develop curriculum for advanced training of Peer and Family Support Specialists. Sonnet is committed to helping Peer and Family Support Specialists grow both personally and professionally, as she herself, is doing.

Sonnet has worked in the Behavioral Health field since 2012, starting as a Peer Support Specialist, and then becoming a trainer and manager for other peer support workers. She also worked as a Case Manager and Rehabilitation Specialist, providing direct care services in a clinical setting. With her lived experience, Sonnet is passionate about her career in peer and family support and being able to help people help themselves to live meaningful, productive lives. Her peer support roots are at the heart of all the work she does.

Sonnet is currently working toward a Bachelor's in Business Management from University of Phoenix. As she continues her personal recovery journey, she is excited to advance the peer movement by supporting peers and families to have dynamic and rewarding experiences in their recovery journey too.

## Board Advisors

Andy Bernstein  
Clinical Professor, Department of Family & Community Medicine; Clinical Director, UA RISE Health and Wellness Center (Camp Wellness), University of Arizona

Deb Jorgensen  
Manager, Office of Individual & Family Affairs, Care1st Health Plan of Arizona

Laura Piontkowski  
Office of Individual & Family Affairs Administrator, Mercy Care

Joshua Sprunger  
Office of Individual & Family Affairs Administrator, Molina Complete Care of Arizona

## Consultants

Kristina Sabetta

Paige Rogers

Dawn Augusta

## Trainers

Mitchell Corderre

Micheal Beltran

Roy Monroe

Carlie Mooney

Christa Lutz

Darius Perry

Kim Foy

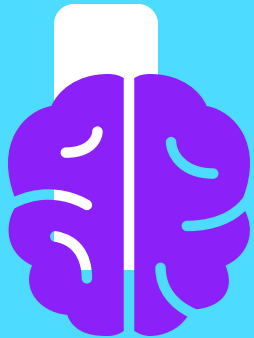
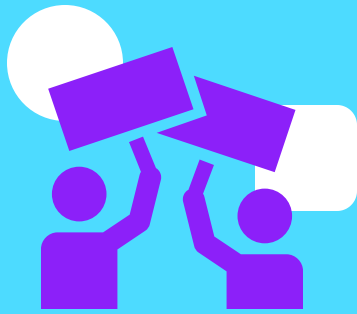
Deb Jorgensen

Kristina Sabetta

Paige Rogers

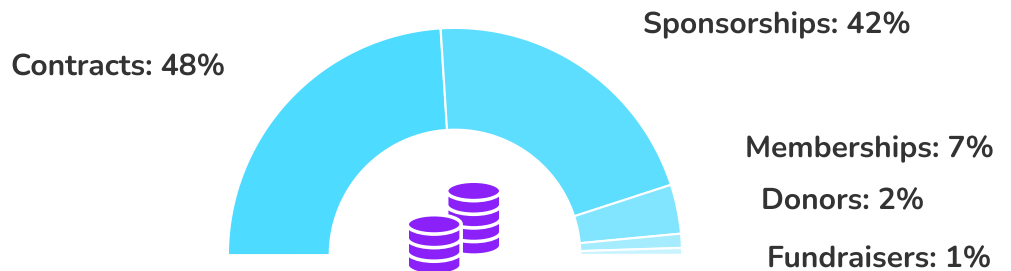
**TOGETHER**



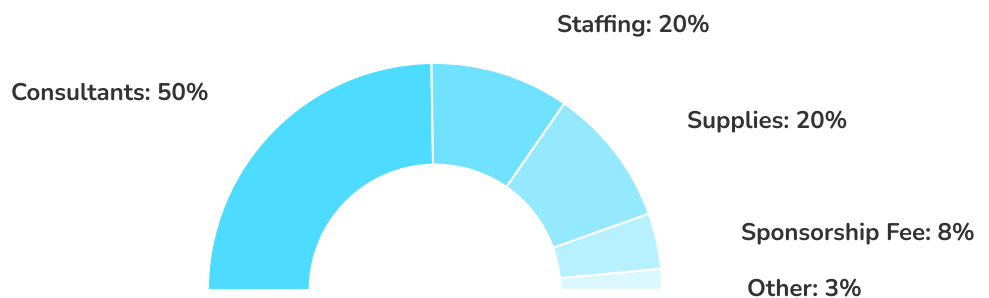


# FINANCE

## Sources of Funding...



## Annual Expenses 2021



**\$182** COST FOR AN INDIVIDUAL TO COMPLETE 16 HOURS OF TRAINING

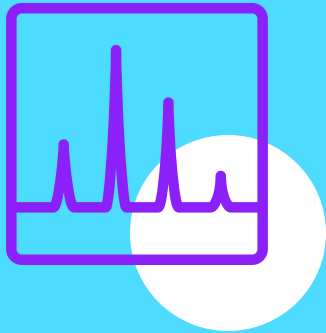
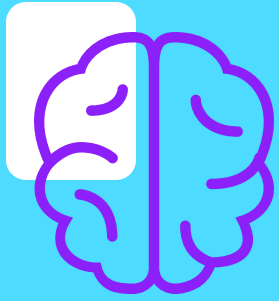
*Arizona Peer and Family Career Academy operates under Fiscal Sponsorship of Technical Assistance Partnership of Arizona (TAPAZ)*

THANKS TO OUR SPONSORS AND CONTRACTS

**ALL TRAININGS WERE FREE OF CHARGE**

TO OUR STUDENTS AND PROVIDERS





# Plans for 2022

Moving forward

## New Training Development

- Trauma Informed Care - Connecting To The Deeper Cause
- Motivational Interviewing - Motivating Change
- Technology For Health - Utilizing Telehealth to Deliver Powerful Peer and Family Support Services
- Interdependence to Independence - Encouraging Members to Regain their Independence
- Peer Support Refresher Series - Stay Up to Date with Newest Best Practices for Peer Support
- Family Support Refresher Series - Stay Current on New Knowledge for Family Support

## Statewide Peer and Family Network

We continue to focus our efforts on building a statewide peer and family network to include our Peer to Peer program, Job Opportunities, Networking, and a Statewide conference.

## Stay in Contact with What's Happening with PFCA!

We always have new and exciting events occurring, please consider staying in contact with us by one of the following ways;



Check out our website [www.azpfca.org](http://www.azpfca.org)



Sign up to receive our Newsletter



Like our Facebook page @azpfca



Follow us on Instagram @AZPFCA



Connect on LinkedIn



Follow us on Twitter @AZPeerFamily



Watch us on Youtube



Call Us (855) 829-7322

